



PIONEER INDUSTRIES, INC.
 3325 S. Garfield Ave.
 Commerce, CA 90040
 (800) 338-9468
 www.pioneerind.com

INSTALLATION

Tools:



Adjustable Wrench



Plumbers Putty



Teflon Tape



Rags

Model Number: 2DM300, 2DM301, 2AM500, 2AM501

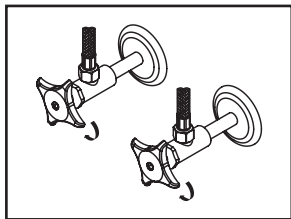


Warnings and Notes:

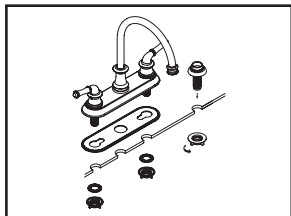
Check with local plumbing code requirements before installation.
 This product should be installed by a local listed plumber.
Do not use plumbers putty on threads.

Installation Steps:

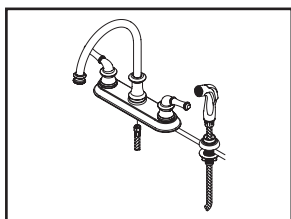
Two Handle Kitchen Faucet



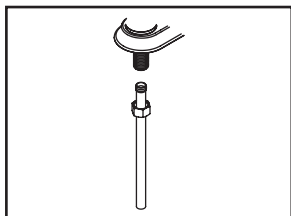
(1) Shut off water supplies. Remove old faucet. Clean mounting surface in preparation for new faucet.



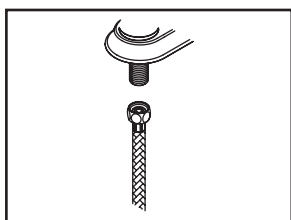
(2) Apply plumbers putty under the base gasket, with base gasket on the bottom of deck plate, place faucet in position on the sink. Slide washers on shanks and secure the locknut to the shanks from underneath the sink. If faucet is without side spray please go to step (4a). Place side spray holder in position on the sink, tighten locknut from underneath the sink to secure side spray holder.



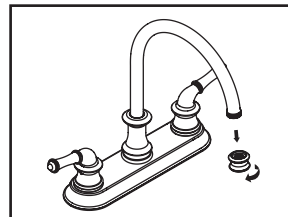
(3) Lead side spray hose through side spray holder. Connect side spray hose to faucet body from underneath the sink.



(4a) when using ball-nose flexible supplies to connect faucet to water supply valves, slip coupling nut onto flexible supply. Ball-nose coupling will go partially into shank. Tighten coupling nut (DO NOT OVERTIGHTEN). Install opposite end according to manufacturer's instruction for both tubes.



(4b) when using stainless steel braided faucet supply hose; this faucet requires one end of the supply hose to have a 1/2" female IPS connection. The other end of this supply hose must match the thread on the water supply valve under your sink. Once you've identified the required size, carefully follow the manufacturer's installation instructions for each hose.

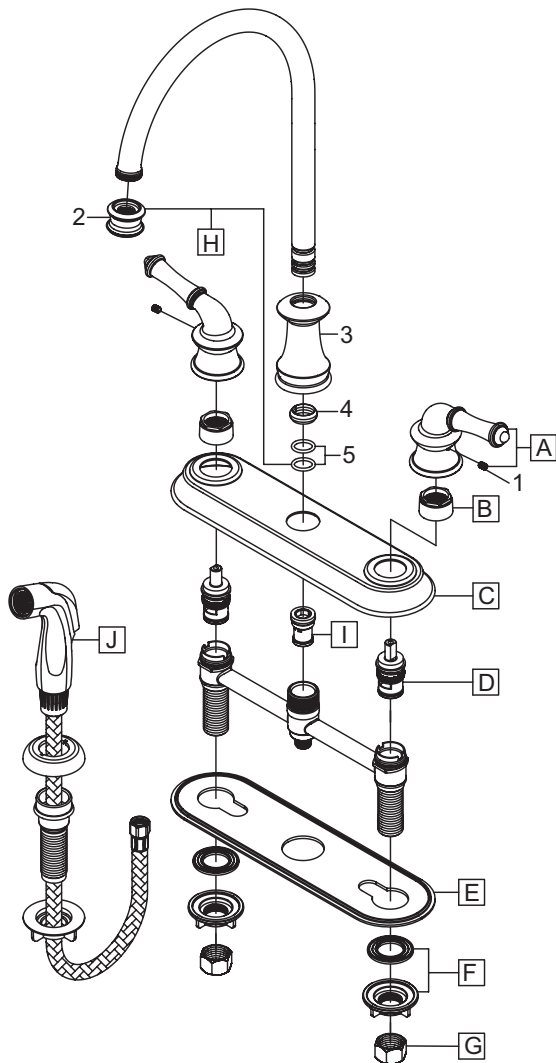


(5) Important: After installation is complete, remove aerator. Turn water supplies on and allow both hot and cold water to run at least one minute each. While water is running, check for leaks. Turn off water and replace aerator.

Exploded Drawing : (For 2DM300, 2DM301)

* Note: Please specify finish/color when ordering.

	ITEM #	DESCRIPTION
A	X-1200006*	DM Lever Handle
B	X-4900007	Bonnet Nut
C	X-4200021*	Deck Plate
D	X-3900002C,H	Ceramic Stem-Cold,Hot
E	X-4200022	Base Plate
F	X-4900008	Mounting Kit
G	X-4900004	Supply Nuts
H	X-2200004*	DM High Gooseneck Spout
I	X-4200016	Diverter Piston (For 2DM301)
J	X-4200018*	Side Spray Assembly (For 2DM301)
1	X-4900002	3/32" Allen Screw
2	X-4200114*	1.5 GPM Aerator
3	X-4200020*	Spout Bonnet Nut
4	X-4900013	Spout Snap Ring
5	X-4900012	Spout O-rings

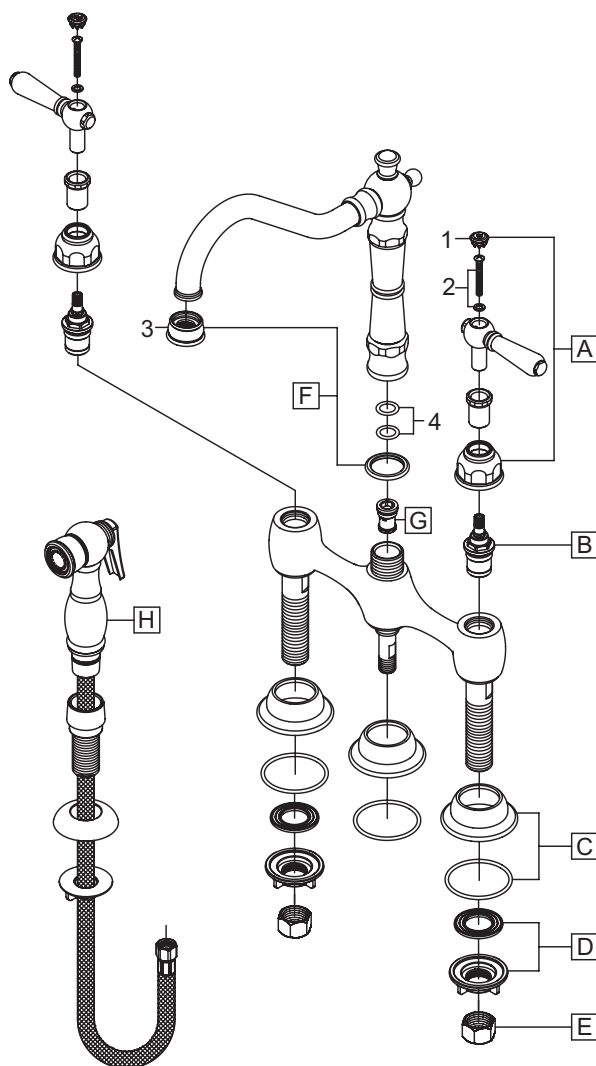


For more care information or trouble shooting inquiries
 about your Pioneer product, please call:
Pioneer Industries, Inc. (800) 338-9468
 Monday-Friday 8AM to 8PM EST (5AM to 5PM PST)
www.pioneerind.com

Exploded Drawing : (For 2AM500, 2AM501)

* Note: Please specify finish/color when ordering.

	ITEM #	DESCRIPTION
A	X-1200008C,H*	Lever Handle-Cold,Hot
B	X-3200004C,H	Ceramic Stem-Cold,Hot
C	X-4200063*	Escutcheon and Gasket
D	X-4900008	Mounting Kit
E	X-4900004	Supply Nuts
F	X-2200013*	Americana Spout
G	X-4200016	Diverter Piston (For 2AM501)
H	X-4200059*	Side Spray Assembly (For 2AM501)
1	X-4900042C,H*	Handle Button-Cold, Hot
2	X-4900035	Handle Screw
3	X-4900091*	1.5 GPM Aerator
4	X-4900012	Spout O-Rings



For more care information or trouble shooting inquiries
 about your Pioneer product, please call:
Pioneer Industries, Inc. (800) 338-9468
 Monday-Friday 8AM to 8PM EST (5AM to 5PM PST)
www.pioneerind.com